

LAND ACKNOWLEDGEMENT

We acknowledge that the land we work and meet on is the traditional territory of many nations including the Mississaugas of the Credit, the Anishnabeg, the Chippewa, the Haudenosaunee and the Wendat peoples and is now home to many diverse First Nations, Inuit and Métis peoples. We also acknowledge that Toronto is covered by Treaty 13 with the Mississaugas of the Credit.

Artwork by Chief Lady Bird

The trans-LINK Canada Project: Partnering to Create and Exchange Knowledge on Supporting Transgender and Gender Diverse Survivors of Sexual Assault and Intimate Partner Violence

**Janice Du Mont, she/her
Project Director**

Partners Meeting
(October 2023)



UNIVERSITY OF
TORONTO



Staff and Trainees

- Daisy Kosa (she/her), Research Associate
- Danielle Toccalino (she/her), Postdoctoral Health System Impact Fellow
- Hannah Seo (she/her), Research Assistant/Master's Student
- Mechaela Alfonso (she/her), Research Assistant/Master's Student
- Taha Arshad (he/him), Project Coordinator
- Madelaine Coelho (she/her), Research Assistant/PhD Student**

**capacity in French language



UNIVERSITY OF
TORONTO



Partnering Organizations



Co-Investigators

- Adam Davies, University of Guelph
- Alexa Yakubovich, Dalhousie University
- Annie Sansfaçon, Université de Montreal
- Brittany Jakubiec, Egale
- Catherine Carter-Snell, Mount Royal University
- Chelsea Thacker, Northern Mosaic Network
- Hannah Kia, The University of British Columbia
- Jake Pyne, York University
- Nadine Schuurman, Simon Fraser University
- Sheila Early, Canadian Forensic Nurses Association
- Sheila Macdonald, Ontario Network of Sexual Assault/Domestic Violence Treatment Centres
- Sulaimon Giwa, Memorial University



UNIVERSITY OF
TORONTO



Academic Collaborators

- Aaron Devor, University of Victoria
- Cindy Peternelj-Taylor, University of Saskatchewan
- Gianni Lorello*, University of Toronto & University Health Network
- Notisha Massaquoi*, University of Toronto
- Robin Mason*, Women's College Research Institute, Women's College Hospital

*EDI Champions



UNIVERSITY OF
TORONTO



SSHRC External Panel Reviewer Comments

*"The panel agreed that this is an **outstanding proposal** that **rates highly in all domains** (challenge, feasibility, capability, and EDI). **The project is visionary and innovative**, addressing a **novel and underaddressed pressing social justice and public health issue** (sexual assault [SA] and intimate partner violence [IPV] against trans and gender diverse [TGD] persons). Furthermore, the panel agreed that this **proposal is stunning** in terms of its scope, **thoughtful** planning, and **attention to detail**. There is clear evidence that the network structure, task and resource allocation, research activities and community-based checks and balances have been **collaboratively developed** in accordance with best practices. If the partnership is successfully enacted, the **results will not only yield significant advancements for the health and well-being of TGD Canadians but will also position Canada as a global knowledge and practice leader in this arena.**"*



UNIVERSITY OF
TORONTO



PROJECT BACKGROUND



UNIVERSITY OF
TORONTO



What is the Problem We Will Address?

- Trans and gender diverse (TGD) individuals experience high rates of sexual assault (SA) and intimate partner violence (IPV)
- TGD survivors of SA and IPV also experience stigma and other forms of structural violence
 - Transphobia, racism, classism, ableism, etc.
 - (Current political climate is both a reflection of this, as well as a catalyst for further harm)
- Despite this, TGD survivors often have limited access to safe, non-stigmatizing services post-assault



UNIVERSITY OF
TORONTO

WCHI
WOMEN'S COLLEGE
RESEARCH INSTITUTE
Healthcare | REVOLUTIONIZED

What Will Our Project Do?

Improve supports for TGD survivors of SA and IPV across Canada by bringing together diverse:

- TGD-positive community and healthcare organizations,
- TGD communities,
- the public sector,
- academics, and
- trainees

People want to learn how to better support these individuals and their communities, but often don't know how or where to start



UNIVERSITY OF
TORONTO

WCHI
WOMEN'S COLLEGE
RESEARCH INSTITUTE
Healthcare | REVOLUTIONIZED

How Will We Do This?

- By establishing an intersectoral network with partners across various sectors (e.g., community, health, public) to address research gaps, share information, and co-design and evaluate training, guidelines, and policy recommendations to address these issues
 - Intersectoral networks are proven to be effective in establishing programs, policies, and practices that respond to the needs of SA/IPV survivors
 - TGD SA/IPV survivors have unique needs that require the expertise and resources of different types of services and providers across sectors (e.g., hospital-based violence centres, HIV/AIDS community supports and services, advocacy organizations)

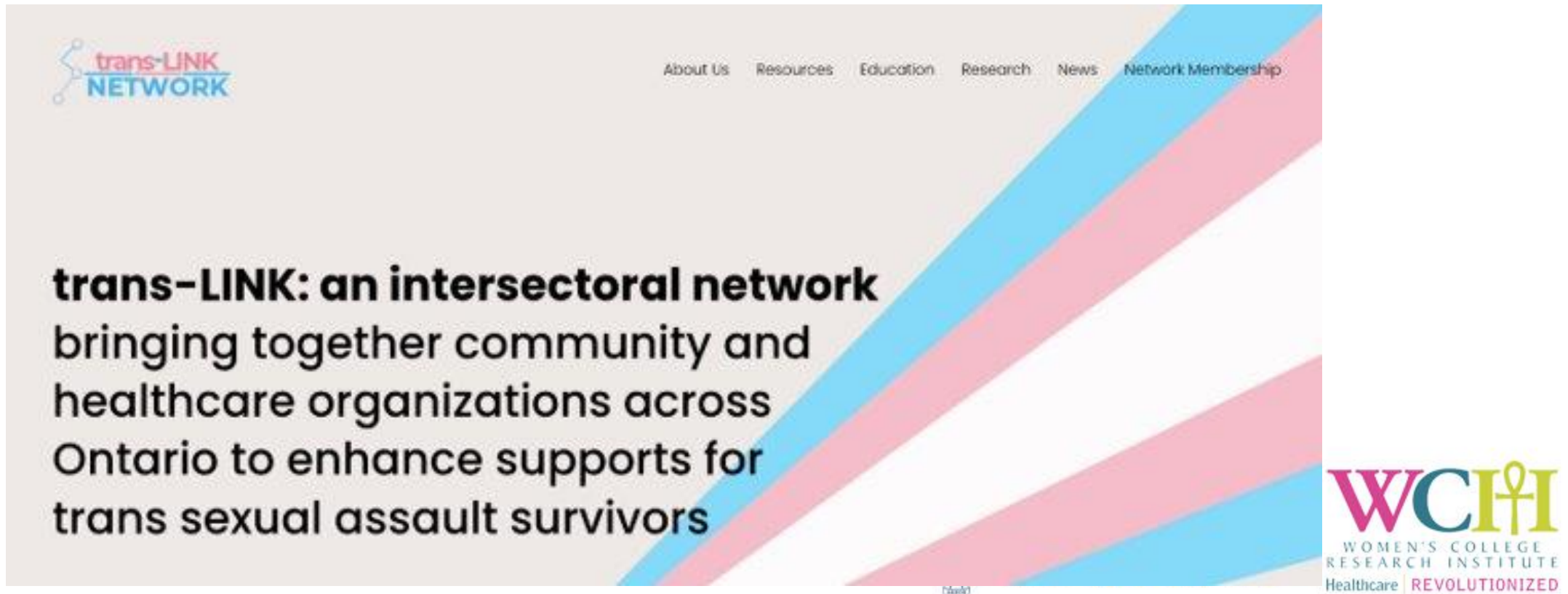


UNIVERSITY OF
TORONTO

WCHI
WOMEN'S COLLEGE
RESEARCH INSTITUTE
Healthcare | REVOLUTIONIZED

How Do We Know This Will Work?

- Trans-LINK Canada Network will build on the strong foundation established by the Ontario trans-LINK Network



The image shows a screenshot of the trans-LINK NETWORK website. The header features the trans-LINK NETWORK logo on the left and a navigation menu with links for About Us, Resources, Education, Research, News, and Network Membership on the right. The main content area contains the following text:

trans-LINK: an intersectoral network
bringing together community and
healthcare organizations across
Ontario to enhance supports for
trans sexual assault survivors

In the bottom right corner, there is a logo for the Women's College Research Institute (WCRI) with the tagline "Healthcare | REVOLUTIONIZED".

Some Accomplishments of the Provincial Network

- 130+ partners
- Established an evidence-informed Web Portal to share resources with >7,000 global visitors and >14,000 page views to date (Translinknetwork.com)
- Developed information sheets and curricula for community and healthcare workers
- Created and ran an anti-discrimination advocacy campaign
- Evaluation: Network received strong scores for trust and value and demonstrated widespread connectivity among members
 - 378 unique/dyadic collaborations developed



UNIVERSITY OF
TORONTO

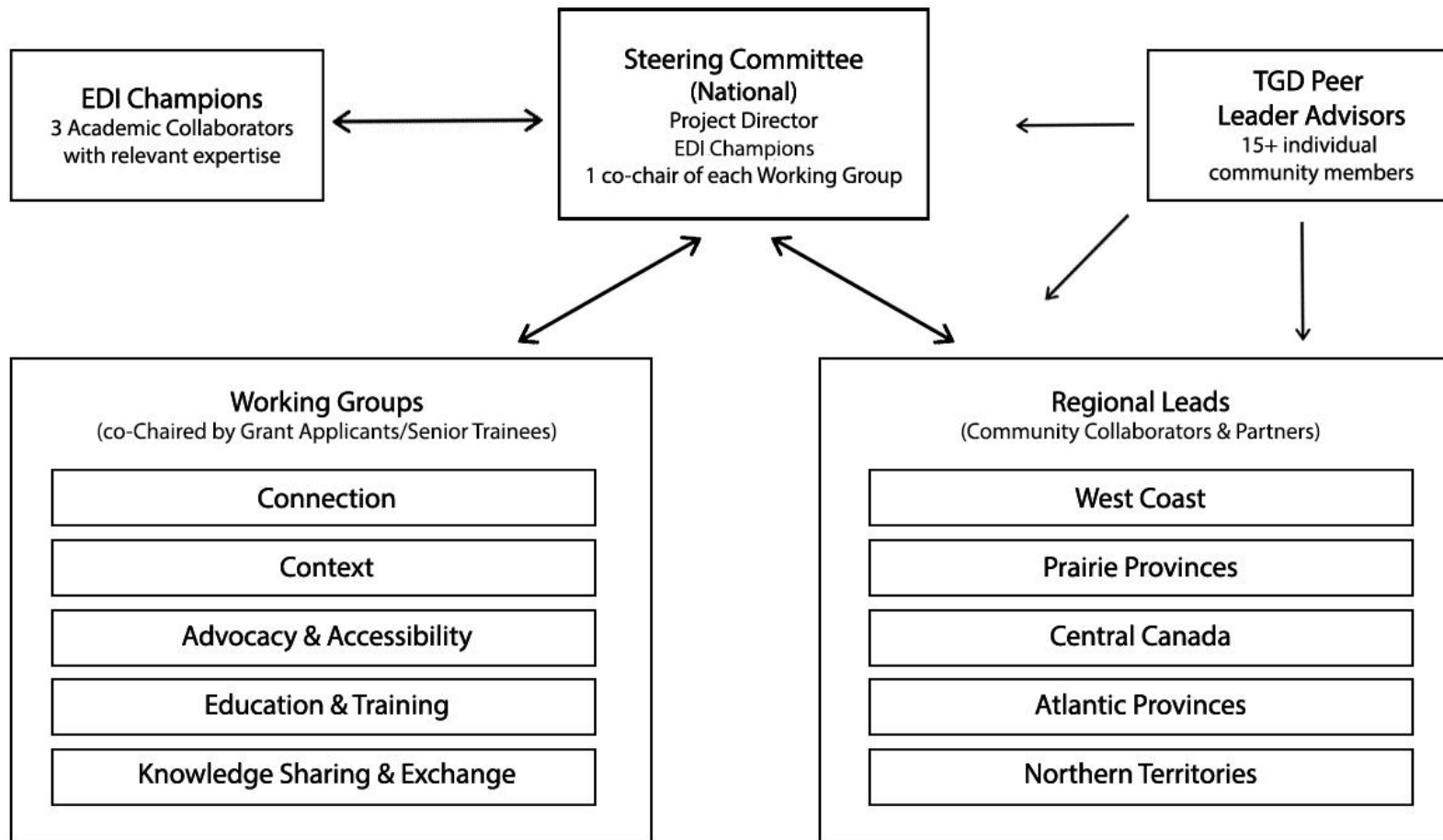


GOVERNANCE



UNIVERSITY OF
TORONTO





- Various groups meet regularly
- Representatives from each group convey information and updates from meetings to the Steering Committee

PARTNERSHIP OPPORTUNITIES

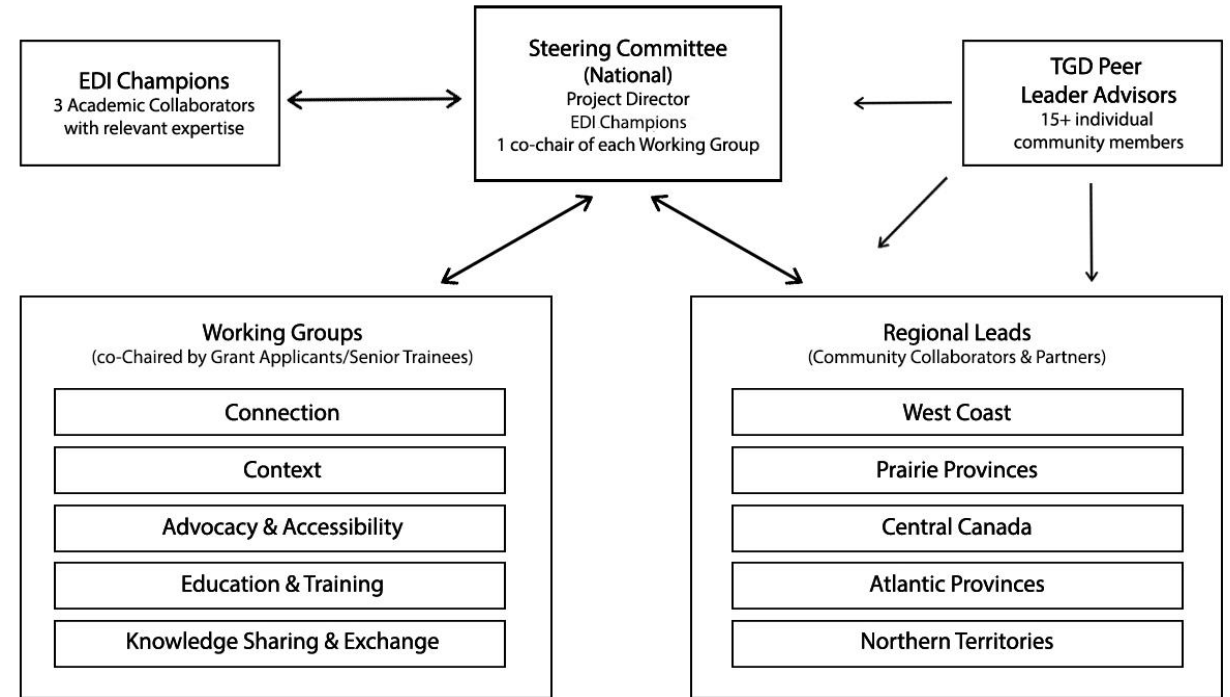


UNIVERSITY OF
TORONTO

WCHI
WOMEN'S COLLEGE
RESEARCH INSTITUTE
Healthcare | REVOLUTIONIZED

Regional co-Leads

- 10 community partner organizations (2 in each region—see diagram) with knowledge of their area, including specific EDI-related challenges and systemic barriers to support, will co-lead regional activities, including involvement in the biennial CEKM Meetings
- Regional co-Leads will be supported by a funded PhD student, Peer Leader Advisors, TGD community researchers, and an Education and Events Coordinator
- We will be reaching out to confirm Regional co-Leads
- Co-leads will gain community leadership and community engaged research experience



UNIVERSITY OF
TORONTO



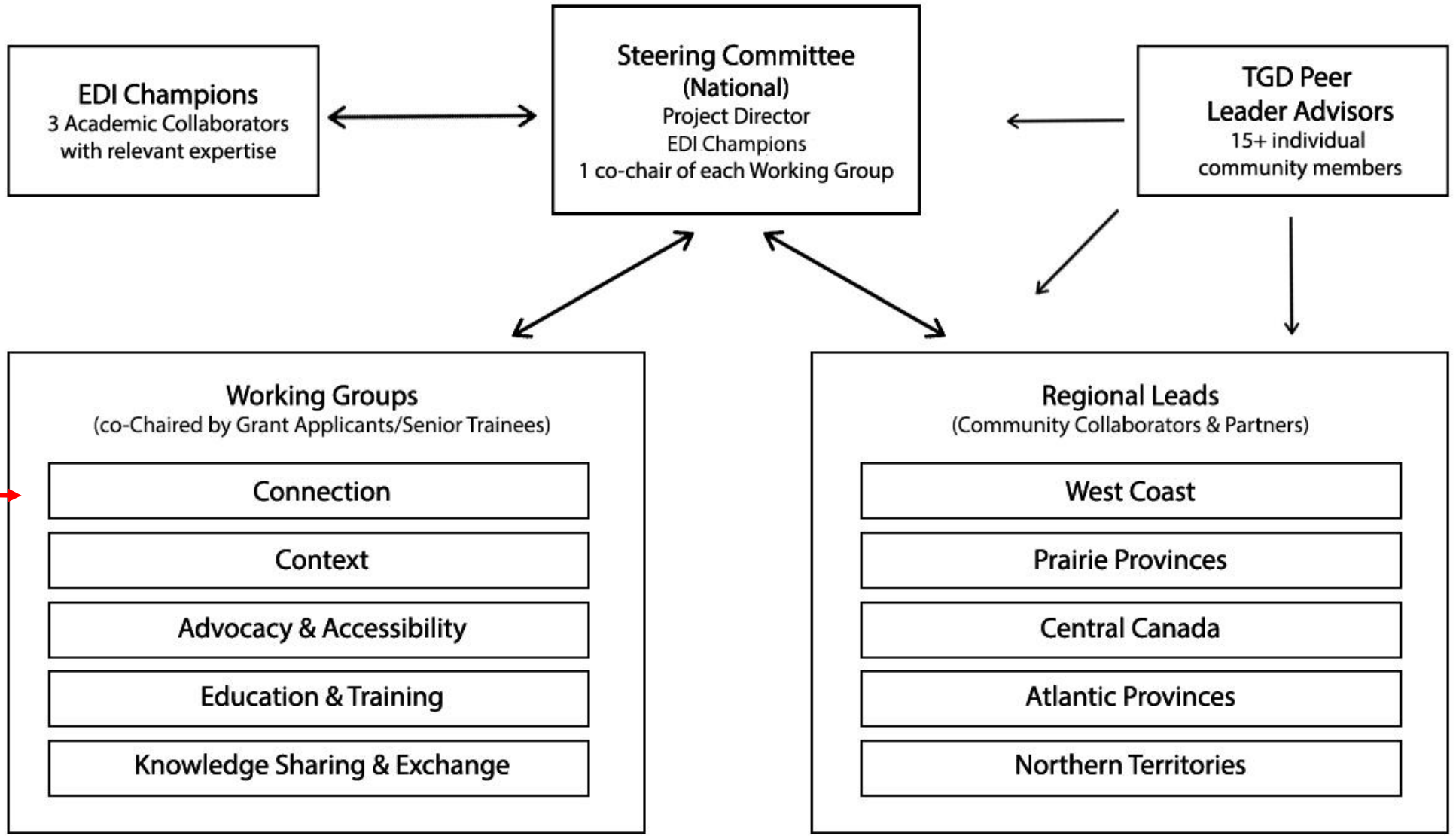
Working Groups

- All partner organizations will have the opportunity to be part of a working group. Working groups will:
 - lead specific research and knowledge mobilization activities
 - provide opportunities for leadership and involvement in socially impactful research
 - allow organizations to build capacities in different research methodologies and diversify their skillsets
 - meet approximately bi-monthly with additional communications, updates, etc. through Slack, newsletter, and email
- Working groups will be supported by trainees, co-investigators, and academic collaborators



UNIVERSITY OF
TORONTO

WCHI
WOMEN'S COLLEGE
RESEARCH INSTITUTE
Healthcare | REVOLUTIONIZED



OBJECTIVE 1 →

Objective 1 (CONNECTION Working Group)

- Establish and evaluate a first-of-its-kind national network--**the trans-LINK Canada Network**--which brings together TGD-led and TGD-positive organizations across Canada
- Bring existing and new organizations together for bi-annual Community Engagement and Knowledge Mobilization (CEKM) Meetings in all 5 regions (West Coast, Prairie Provinces, Central Canada, Atlantic Provinces, Northern Territories) and a National Symposium
 - strategize on how to establish and maintain relationships
 - bring experiences and insights to aid in grant research and knowledge mobilization activities,
 - develop collaborative and creative solutions to overcome barriers to collaboration and appropriately supporting TGD survivors
- In years 1, 3, 5, and 7, social network analysis tools will be administered to capture how well organizations have been working together regionally

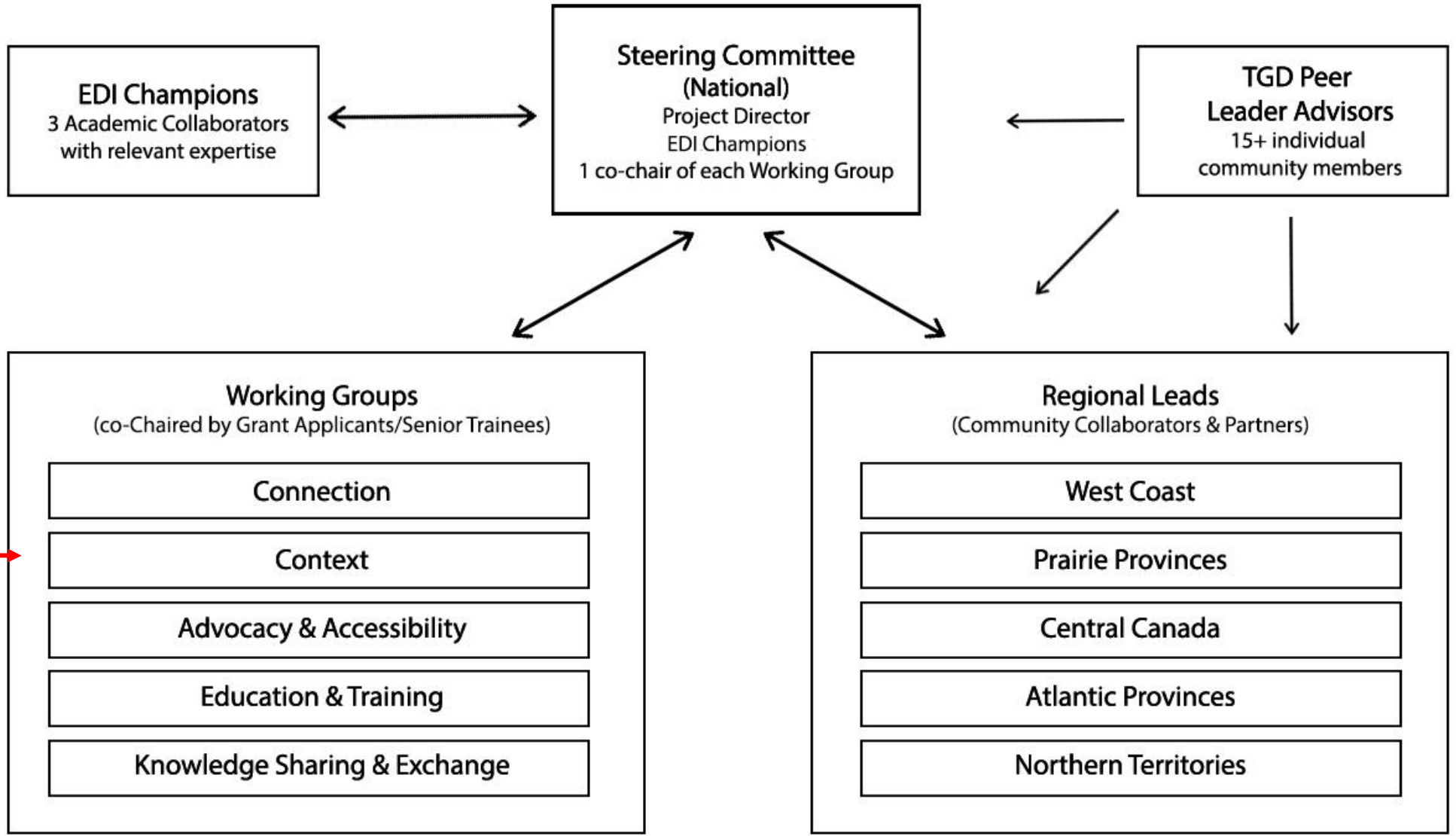
Objective 1: Partner Role/Opportunities

- Your extensive connections in the diverse fields and regions you represent will be critical in addressing barriers to collaborating across sectors and establishing an effective national network
- The collaborative nature of this intersectoral network will allow you to build and maintain extensive, meaningful connections and share resources and expertise with other local, regional, and national organizations (e.g., during public health emergencies)
- These connections will also provide opportunities for future collaborations among partners
- Access to Community of Practice webinars and trainings (that can improve the skills and knowledge associated with an intersectoral approach to providing care and supports for TGD survivors of SA/IPV)
- Funds for travel to regional meetings and national symposium



UNIVERSITY OF
TORONTO





OBJECTIVE 2 →

Objective 2 (CONTEXT Working Group)

- **Determine the scope of the problem through development of the first Canadian, population-based survey focused specifically on SA/IPV against TGD persons**
- **We hope that approximately 2,500 TGD persons aged 14+ will complete the survey**



UNIVERSITY OF
TORONTO

WCHI
WOMEN'S COLLEGE
RESEARCH INSTITUTE
Healthcare | REVOLUTIONIZED

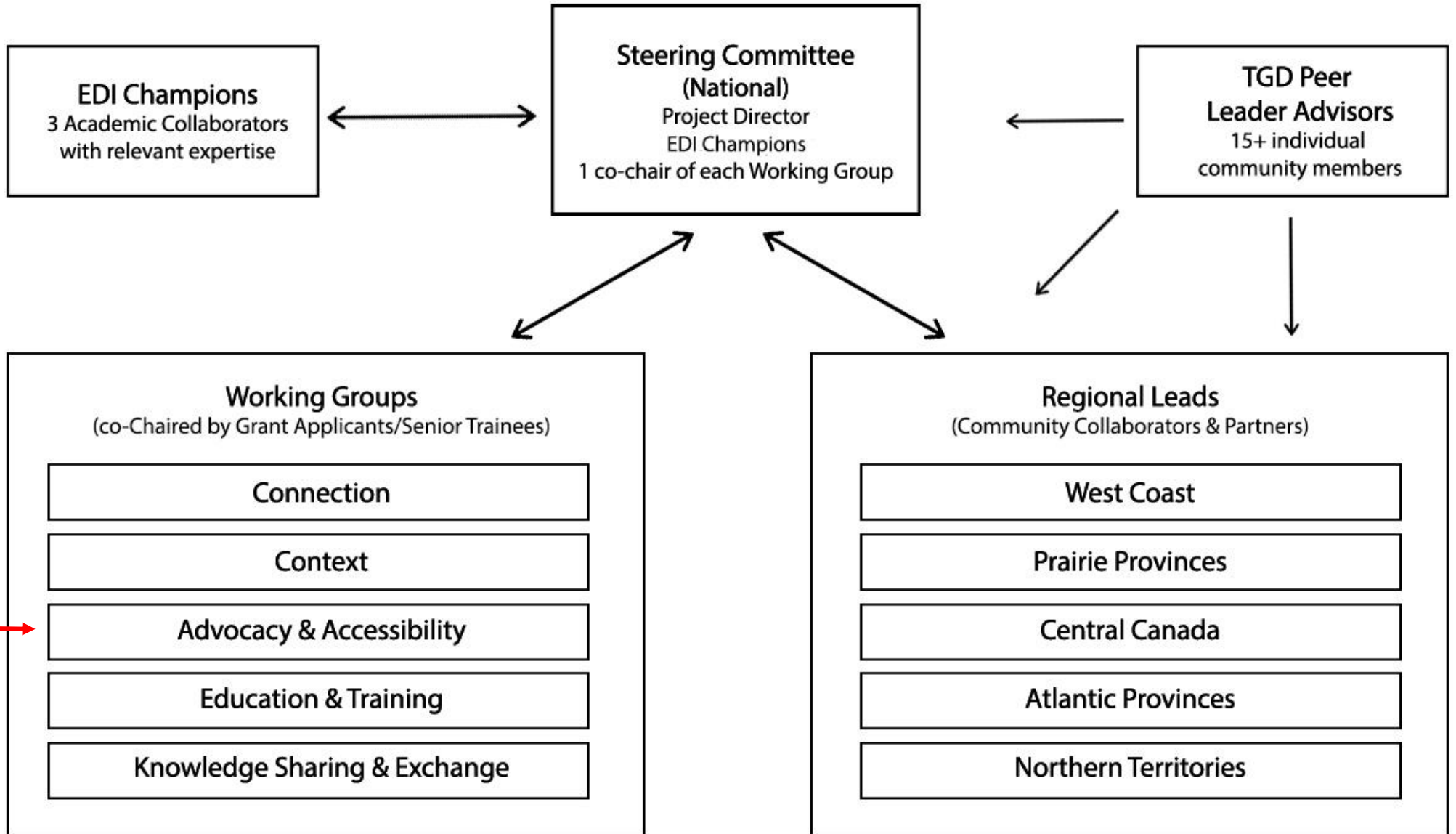
Objective 2: Partner Role/Opportunities

- Your direct connections to and experience developing trust with TGD communities is key to recruitment of diverse respondents to our survey
- Your specialized expertise will aid in development of research questions important to your organization, recruitment of Francophone participants, and facilitating connections to organizations in French-speaking regions of Canada
- You will gain experience with survey design, implementation, and analysis and dissemination of findings



UNIVERSITY OF
TORONTO





OBJECTIVE 3

Objective 3 (ADVOCACY & ACCESSIBILITY Working Group)

- Examine access to services and supports through the collection and analysis of geographic data and insights from SA/IPV survivors and services providers
- Information will be used to generate sector-specific recommendations for policy makers to help bridge services gaps for TGD survivors of SA/IPV



UNIVERSITY OF
TORONTO

WCHI
WOMEN'S COLLEGE
RESEARCH INSTITUTE
Healthcare | REVOLUTIONIZED

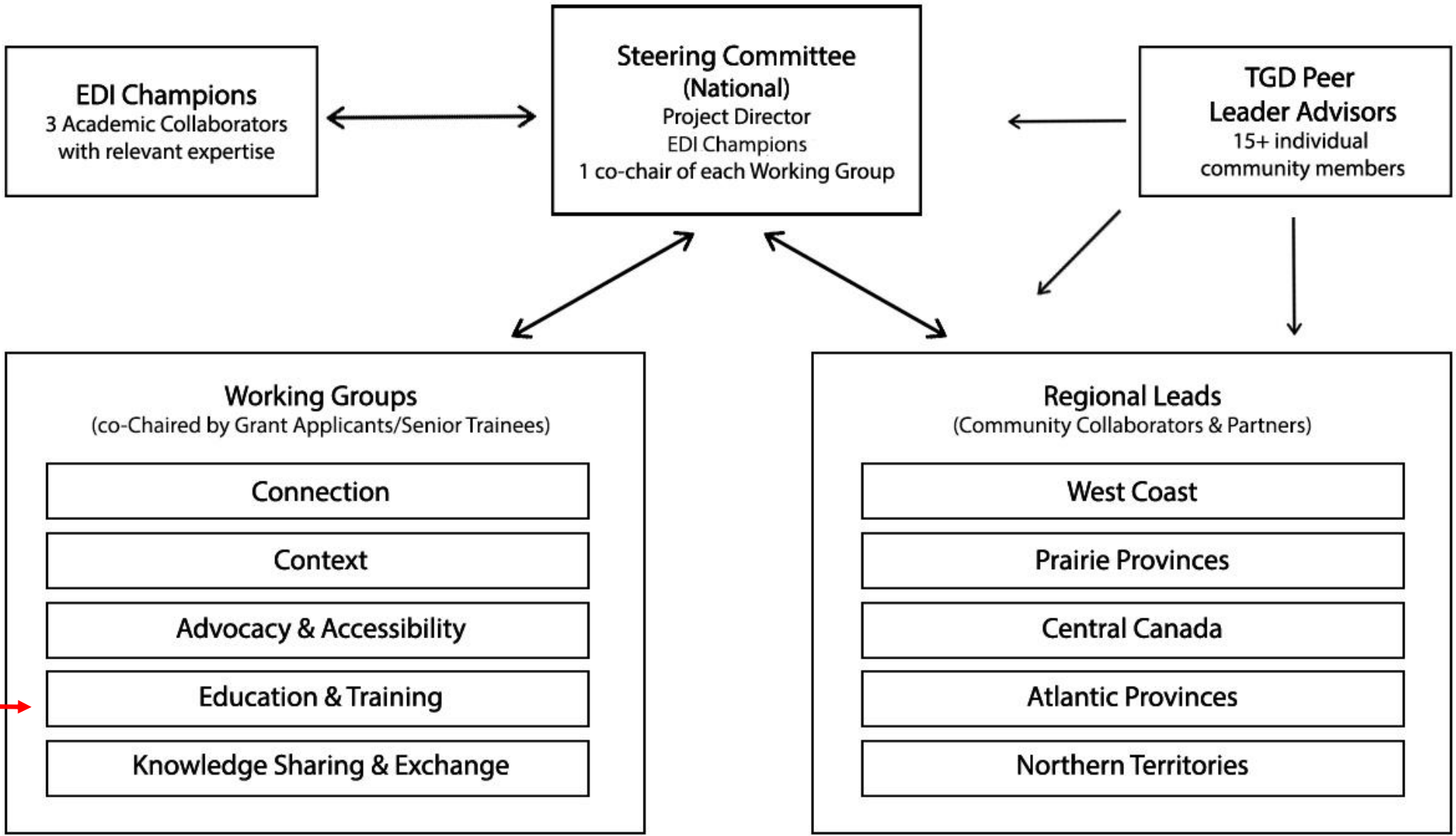
Objective 3: Partner Role/Opportunities

- Your direct connections to and experience developing trust with TGD communities is key to recruitment of diverse TGD survivors for in-depth interviews
- Your potential participation in the focus groups of service providers will generate discussion on how interview findings can inform programs, policies, and practices
- Your specialized expertise will aid in development of the interview and focus group guides, enriching your qualitative research experience



UNIVERSITY OF
TORONTO

WCHI
WOMEN'S COLLEGE
RESEARCH INSTITUTE
Healthcare | REVOLUTIONIZED



OBJECTIVE 4 →

Objective 4 (EDUCATION & TRAINING Working Group)

- **Develop curricula for diverse professionals and environments including police, workplace, and university/college settings**
- **Will build on curriculum currently under development for health and social service providers (funded from the Ontario Government)**



UNIVERSITY OF
TORONTO



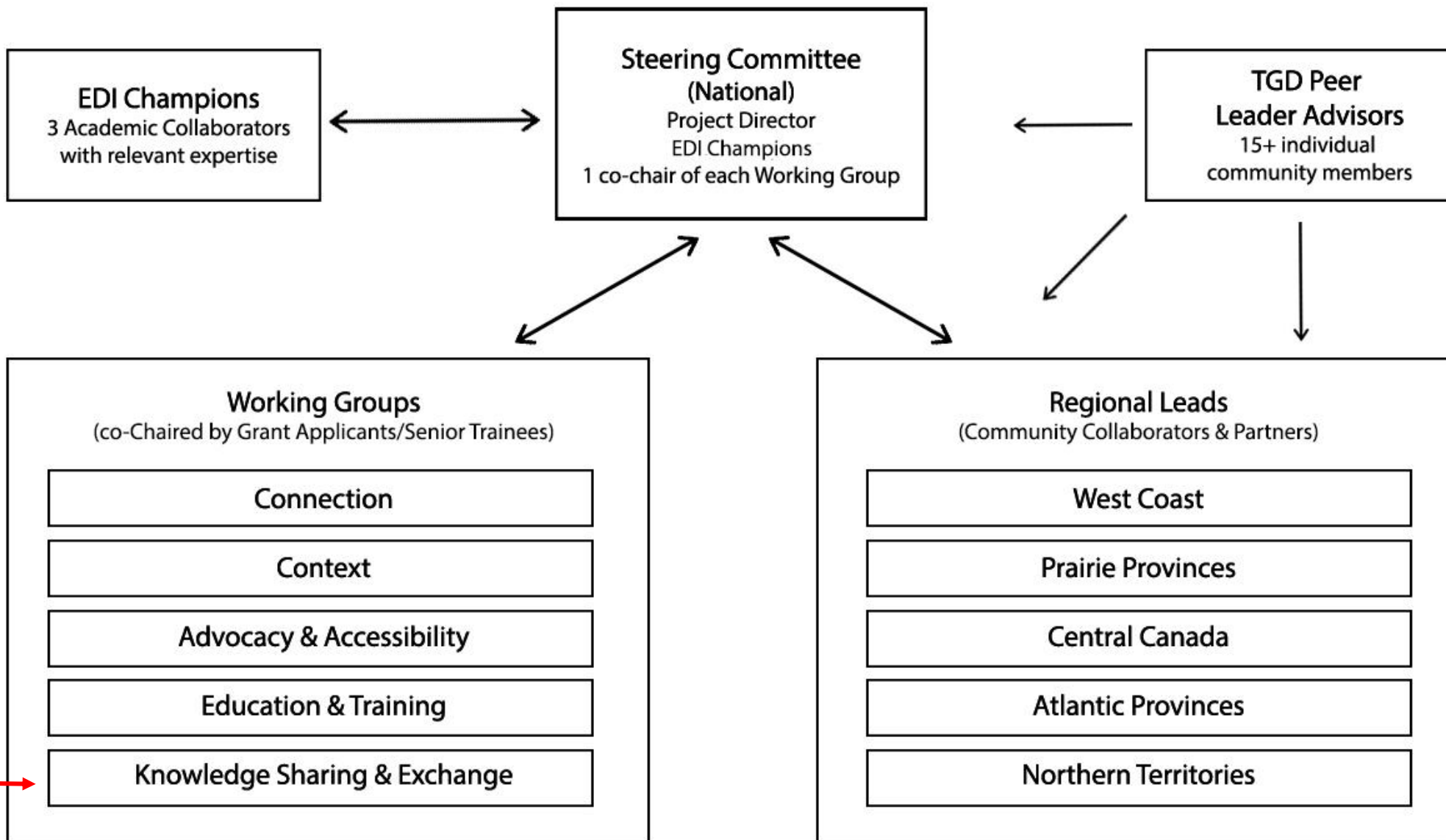
Objective 4: Partner Role/Opportunities

- Your range of expertise in addressing TGD and/or IPV survivors' needs will be essential in effectively developing the e-learning curricula and other associated materials to improve the quality of training for professionals in both English and French
- You will have the opportunity to ensure that the curriculum contains the right material for a broad range of organizations
- You will gain experience in the 6-step approach to developing curricula, conducting environmental scans, scoping reviews of best practices, and pre- and post-training evaluation



UNIVERSITY OF
TORONTO

WCHI
WOMEN'S COLLEGE
RESEARCH INSTITUTE
Healthcare | REVOLUTIONIZED



OBJECTIVE 5

Objective 5 (KNOWLEDGE SHARING & EXCHANGE Working Group)

- We will develop and evaluate an online hub, which will mobilize research and knowledge generated and exchanged across the network, in the form of a web portal



UNIVERSITY OF
TORONTO

WCHI
WOMEN'S COLLEGE
RESEARCH INSTITUTE
Healthcare | REVOLUTIONIZED

Objective 5: Partner Role/Opportunities

- **Your breadth of expertise in service provision can help us collect existing resources that can help improve the response to SA/IPV against TGD persons**
- **With your connections and expertise, we can also develop and disseminate new and helpful resources**
- **The Knowledge Hub will improve your access to appropriate resources, include a Network members-only discussion board, as well as an interactive directory with Canada-wide mapping of your services**
- **You will gain experience in establishing and evaluating a national Knowledge Hub**



UNIVERSITY OF
TORONTO



JAMBOARD ACTIVITY 1:

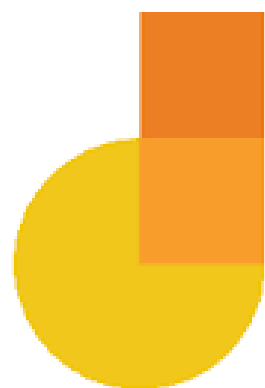
WORKING GROUP SELECTION

- Please select the Working Group you would like to be a part of
 - You can be part of more than 1 Working Group



UNIVERSITY OF
TORONTO





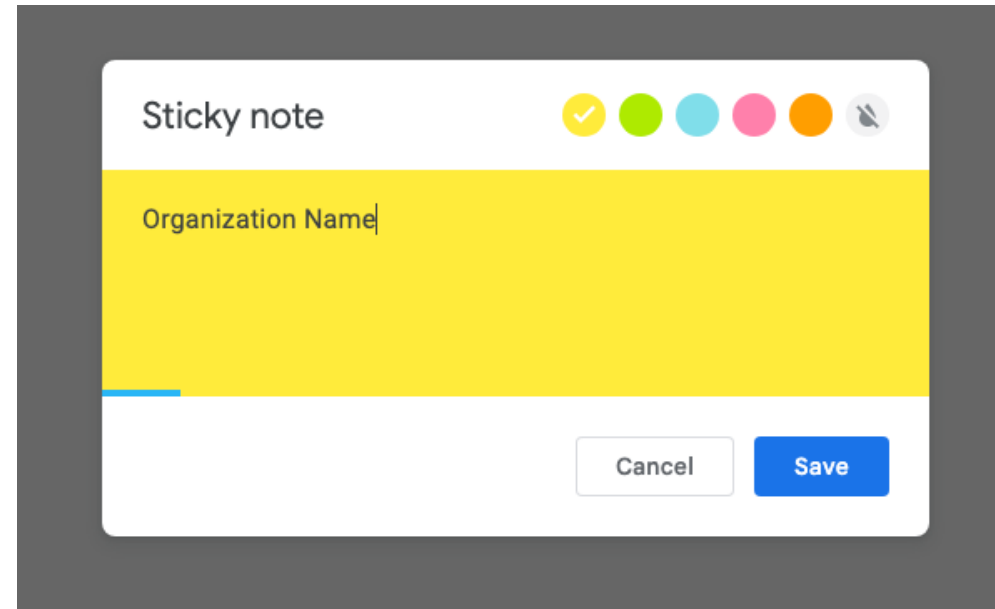
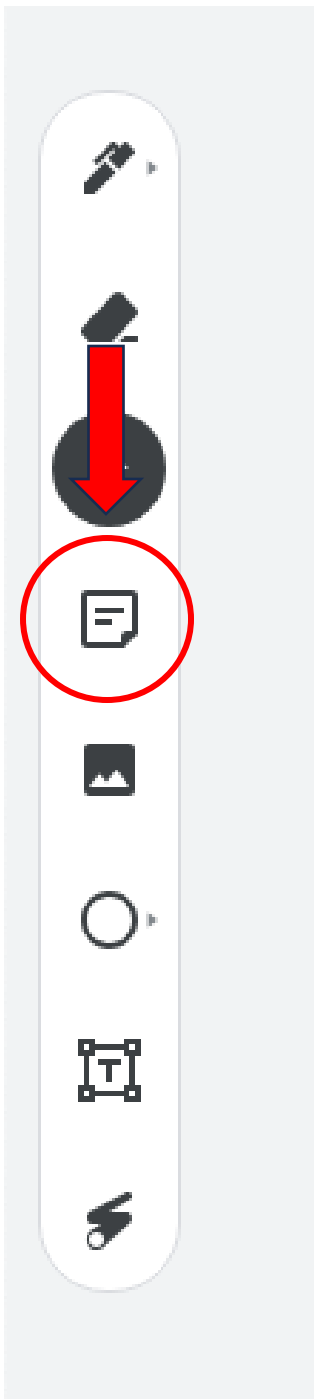
Jamboard



UNIVERSITY OF
TORONTO

WCHI
WOMEN'S COLLEGE
RESEARCH INSTITUTE
Healthcare | REVOLUTIONIZED

Connection	Context	Advocacy & Accessibility	Education & Training	Knowledge Sharing & Exchange



UNIVERSITY OF
TORONTO

WCHI
WOMEN'S COLLEGE
RESEARCH INSTITUTE
Healthcare | REVOLUTIONIZED

Connection	Context	Advocacy & Accessibility	Education & Training	Knowledge Sharing & Exchange
	<p data-bbox="695 425 901 629">Women's College Hospital (Example)</p>			

Connection Working Group	Context Working Group	Advocacy & Accessibility Working Group	Education & Training Working Group	Knowledge Sharing & Exchange Working Group
<p>Develop and lead ongoing evaluations of the national network (Obj.1)</p>	<p>Spearhead a Canada-wide survey on SA/IPV against TGD persons (Obj. 2)</p>	<p>Map access to services, conduct interviews and focus groups, and develop strategies and an advocacy campaign to disrupt systemic practices and policies that create barriers for TGD survivors of SA/IPV to getting needed support (Obj. 3)</p>	<p>Lead a scoping review (barriers to care), environmental scan (best practices), learning needs assessment survey, and e-learning curricula on IPV for national network members and other organizations (e.g., police; Obj. 4)</p>	<p>Guide the development and evaluation of the new Knowledge Hub; implement and evaluate a Knowledge Mobilization Plan (Obj. 5)</p>

JAMBOARD ACTIVITY 2:

trans-LINK CANADA NETWORK MEMBERSHIP SUGGESTIONS

What organizations in your region do you think might be interested in joining the trans-LINK Canada Network?



UNIVERSITY OF
TORONTO



Next Steps

- Confirmation of Regional co-Leads/Regional capacity building (underway) - Obj. 1
 - Madelaine Coelho
- Design of Knowledge Hub – Obj. 5
 - Knowledge Sharing & Exchange Working Group;
 - Everyone: Recommendations for web developers? Appropriate resources?
- Recruitment of TGD Peer Leader Advisors
 - Please send suggestions

CALL FOR PEER LEADER ADVISORS!



The trans-LINK Network, bringing together community and healthcare organizations across Ontario to enhance supports for trans and gender diverse (TGD) survivors of gender-based violence, is **expanding nationwide**. As part of this expansion, the trans-LINK Network team will be leading various research studies and Network-building activities with the aim of coordinating Canada's approach to gender-based violence against TGD persons and building the research base to inform this response over a 7-year period.

We are forming a group of TGD Peer Leader Advisors (PLAs) to shape and guide activities to ensure that the voices, expertise, experiences, and needs of TGD persons are at the forefront of the continued development of the partnership, with the goal of affirming and empowering TGD communities.

WE ARE SEEKING

- Individuals from TGD communities (including folks who are Two-Spirit, gender diverse, genderqueer, non-binary and more) with experience in community work (paid or voluntary)
- A diverse group of TGD people aged 18+ representing various lived experiences
- Representatives from all regions of Canada

RANGE OF ACTIVITIES

- Participate in monthly virtual/in-person meetings (conducted in English), which will take place during working hours (i.e., 9-5, Mon-Fri)
- Provide guidance on regional activities
- Provide input on studies being undertaken and associated documents being drafted (e.g., survey questions, interview guides, knowledge translation outputs)
- Contribute to strategic planning and the development of core policies and processes

HONORARIUM

Compensation will range from \$500-\$1,000 per year, depending on activities undertaken. Any expenses to attend in-person meetings will be fully covered.

FOR FURTHER INFORMATION:

Please contact Taha Arshad at taha.arshad@wchospital.ca with Subject Line "Peer Leader Advisor".

TO APPLY:

Please attach a cover Letter A 2-minute video in which you describe your interest in participating, province of residence, languages spoken, and any relevant lived experience, as desired.

Learn more about the Ontario trans-LINK Network on our WebPortal:

www.translinknetwork.com

Research Coordinator: Taha Arshad (@arshad) | Project Director: Janice Du Mont (@herher)

Final Thoughts/Questions?



UNIVERSITY OF
TORONTO

WCHI
WOMEN'S COLLEGE
RESEARCH INSTITUTE
Healthcare | REVOLUTIONIZED

Thank you!
Merci!

SSHRC  **CRSH**
Social Sciences and Humanities Research Council of Canada
Conseil de recherches en sciences humaines du Canada



UNIVERSITY OF
TORONTO

WCHI
WOMEN'S COLLEGE
RESEARCH INSTITUTE
Healthcare | **REVOLUTIONIZED**